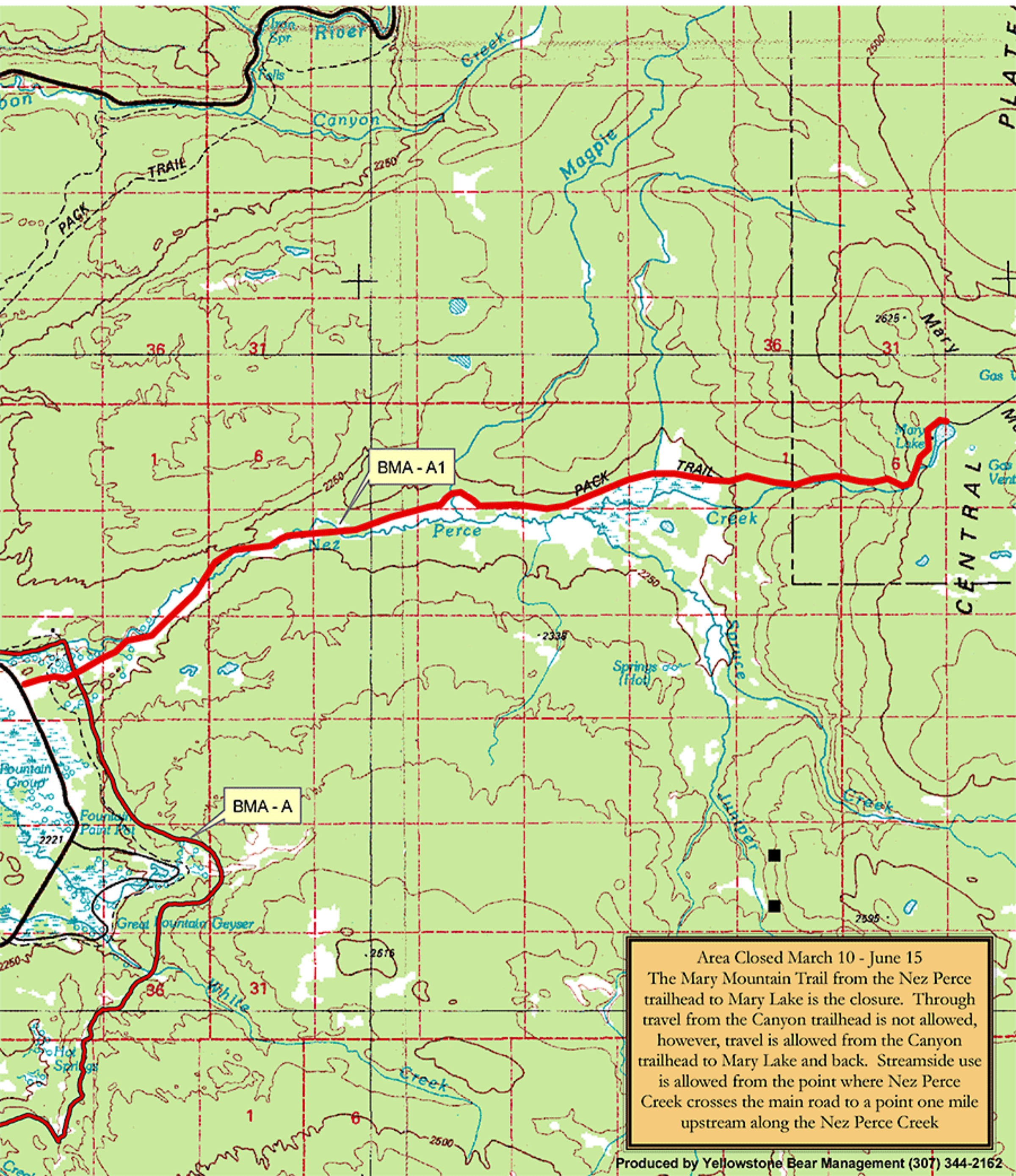




# Bear Management Area A1 - Mary Mountain Trail



Area Closed March 10 - June 15  
The Mary Mountain Trail from the Nez Perce trailhead to Mary Lake is the closure. Through travel from the Canyon trailhead is not allowed, however, travel is allowed from the Canyon trailhead to Mary Lake and back. Streamside use is allowed from the point where Nez Perce Creek crosses the main road to a point one mile upstream along the Nez Perce Creek