

## Native Trout Conservation Area

This area conserves native trout in their remaining drainages, including:

- ◆ Gallatin, Yellowstone, Shoshone, Snake, and Falls rivers, tributaries, and associated lakes
- ◆ Hebgen Lake tributaries and associated lakes, including Cougar Creek, Duck Creek, and Grayling Creek systems

This area does not include the Lewis River system above Lewis River Falls (Lewis and Shoshone lakes and tributaries).

Possession and length limits:

- ◆ Catch and release all native species.
- ◆ Possession limit: 5 combined non-native fish any size per day.
- ◆ All lake trout from Yellowstone Lake must be killed.
- ◆ No possession limit on lake trout in Heart Lake.

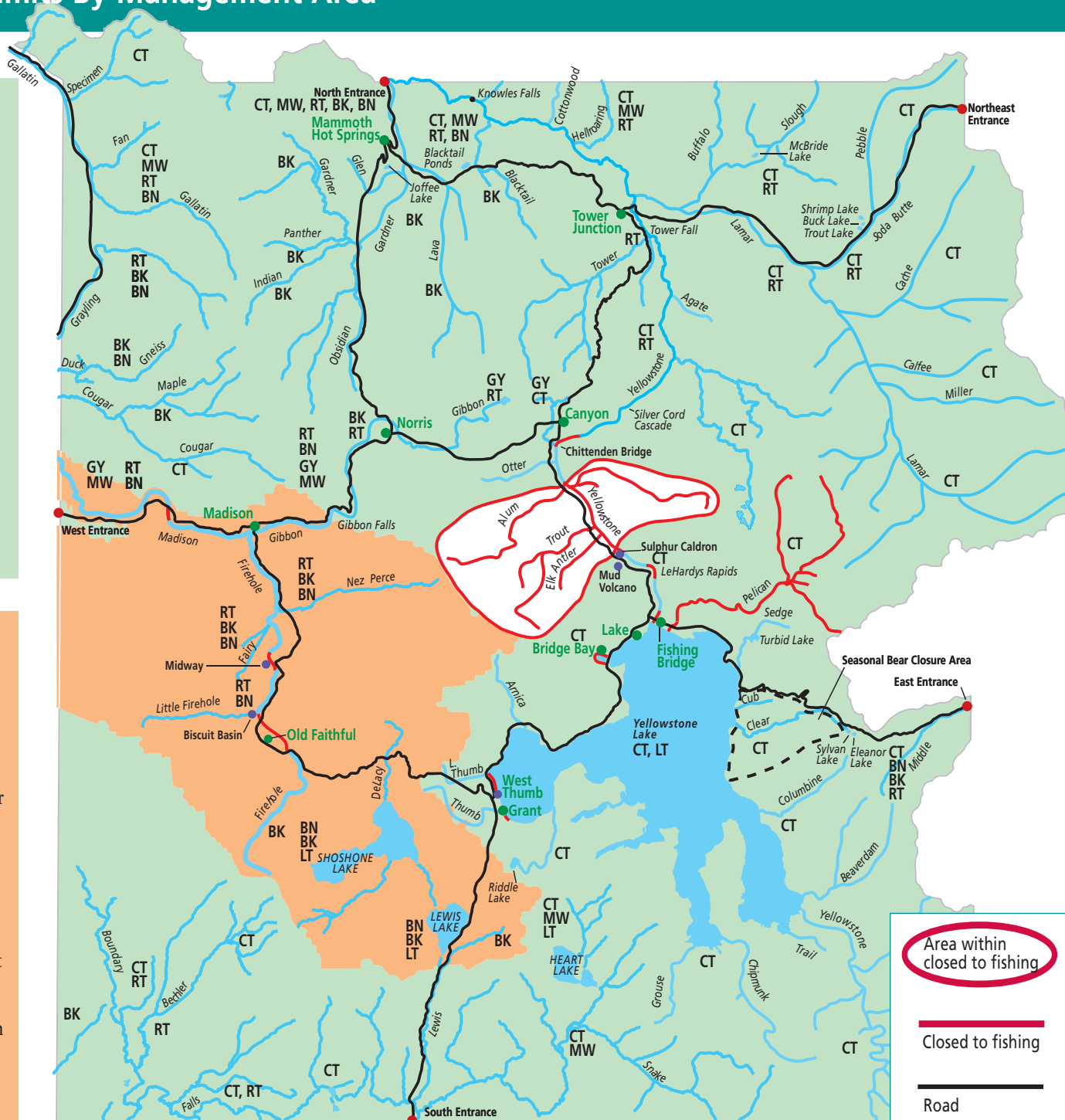
## Wild Trout Enhancement Area

This area conserves native trout and some non-native trout. It includes:

- ◆ Madison River, its tributaries and associated lakes (but not including streams and associated lakes tributary to Hebgen Lake)
- ◆ Lewis River system above the Lewis River Falls, including Lewis and Shoshone Lakes and their tributaries

Possession and length limits:

- ◆ Catch and release all native species.
- ◆ Catch and release all rainbow trout and brown trout.
- ◆ Possession limit: 5 combined brook trout or lake trout. Exception: In the Lewis River system above the Lewis River Falls, this combination may include two brown trout.
- ◆ Above Lewis River Falls, one fish >20"; all fish in possession must remain whole.



If a stream or lake is not listed by name or as a tributary, general regulations apply. You must follow bear management and hydrothermal area restrictions listed in the *Yellowstone Backcountry Trip Planner*, which is available in backcountry offices or at [www.ynp.gov/yell](http://www.ynp.gov/yell).

<p><b>Madison &amp; Gallatin River Drainages</b> (including Firehole and Gibbon rivers and tributaries)</p>	<p>a. Closed to fishing: Firehole River from road bridge ½ mile upstream of Old Faithful to road bridge at Biscuit Basin; Firehole River 200 yards either side of Midway footbridge; Madison River from Seven Mile Bridge upstream 250 yards.</p> <p>b. Flyfishing only: Madison River, Firehole River, Gibbon River below Gibbon Falls (not including their tributaries). Use only artificial flies regardless of the type of rod or line.</p>
<p><b>Snake River Drainage</b> (Snake and Lewis rivers and tributaries)</p>	<p>a. Heart Lake opens to fishing July 1 due to bear activity.</p> <p>b. No size or possession limit on lake trout caught in Heart Lake.</p> <p>c. Above Lewis River Falls, one fish &gt; 20"; all fish in possession must remain whole. See p. 6, Section 7.</p>
<p><b>Lower Yellowstone River Drainage</b> (Yellowstone and Lamar Rivers &amp; tributaries between North Park Boundary and Chittenden Bridge near Canyon)</p>	<p>a. Agate and Cottonwood creeks, and portions of the Yellowstone River within 100 yards of these creeks, open to fishing July 15.</p> <p>b. Gardner River, Obsidian, Indian, and Panther creeks, and Joffe Lake: Children 11 years of age or younger may fish with worms as bait.</p> <p>c. Slough Creek upper meadows have been invaded by rainbow trout. If you are positive of your fish identification, please harvest rainbow trout here to help conserve cutthroat trout.</p> <p>d. Trout, Shrimp, and Buck lakes, and connecting waters, open to fishing June 15. The stream and inlet area that drains into Trout Lake opens to fishing July 15.</p> <p>e. Closed to fishing: Yellowstone River, from Chittenden Bridge downstream through the Grand Canyon of the Yellowstone to a point directly below Silver Cord Cascade.</p>
<p><b>Middle Yellowstone River Drainage</b> (between Chittenden Bridge near Canyon and Yellowstone Lake)</p>	<p>a. Fishing season opens July 15.</p> <p>b. Permanently closed to fishing:</p> <ol style="list-style-type: none"> <li>Fishing Bridge and an area one mile downstream (toward Canyon) and one-quarter mile upstream (toward Yellowstone Lake) from the bridge.</li> <li>The Yellowstone River for 100 yards up- and downstream of LeHardys Rapids.</li> <li>The entire west channel of the Yellowstone River near the road at Nez Perce Ford.</li> <li>The Yellowstone River and its tributaries through Hayden Valley from the confluence of Alum Creek upstream (toward Yellowstone Lake) to Sulphur Caldron.</li> </ol>
<p><b>Yellowstone Lake and Upper Yellowstone River Drainage</b> (Lake &amp; tributaries)</p>	<p>a. Fishing season on Yellowstone Lake opens June 15.</p> <p>b. Streams flowing into Yellowstone Lake (its tributaries) and areas within 100 yards of each stream's outlet open July 15.</p> <p>c. Clear and Cub creeks open August 11 due to bear activity.</p> <p>d. Sylvan and Eleanor lakes open to fishing July 15. Boats and float tubes are prohibited.</p> <p>e. Permanently closed to fishing:</p> <ol style="list-style-type: none"> <li>Pelican Creek and its tributaries.</li> <li>The shoreline of Yellowstone Lake from West Thumb Geyser basin to Little Thumb Creek (to protect fragile thermal resources).</li> <li>Bridge Bay Marina/Harbor &amp; Grant Village Marina/Harbor and their channels to the lake.</li> </ol> <p>f. <b>All lake trout caught in Yellowstone Lake, its tributaries, and the Yellowstone River must be killed.</b> If you do not want to keep the fish, puncture the air bladder (see drawing page 13) and drop it into water as deep as possible.</p>